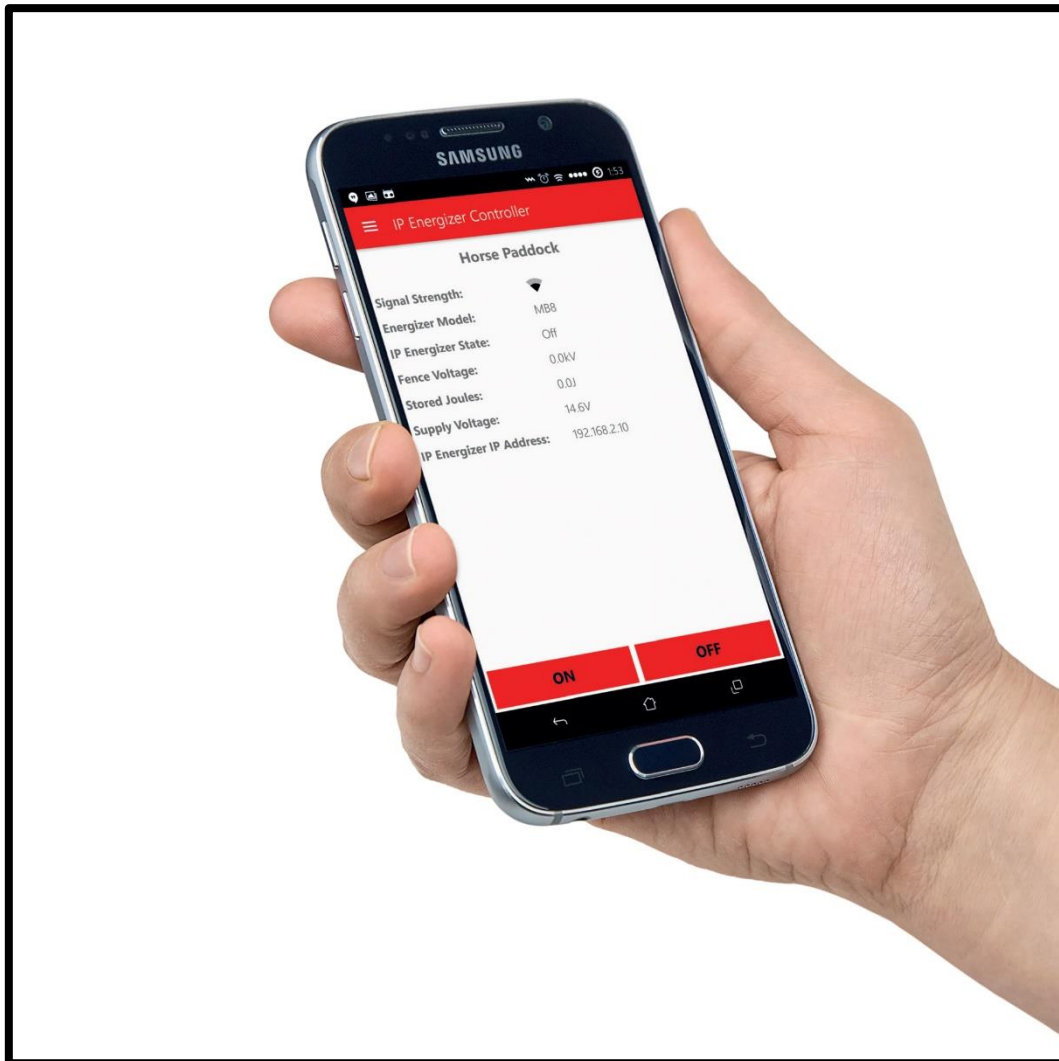


IP Energizer[®] Instructions



IP Energizer® Instructions

Introduction

In order to allow remote control of the IP Energizer® you will need to set up its Wi-Fi connection. If you do not need the IP Energizer remote control feature, you may simply connect the Energizer to the fence and turn it on and off via the front panel on/off switch.

Setting up the IP Energizer is not hard, but we all know that computer equipment can have issues. That is why we have staff ready to take your call and talk you through the setup.

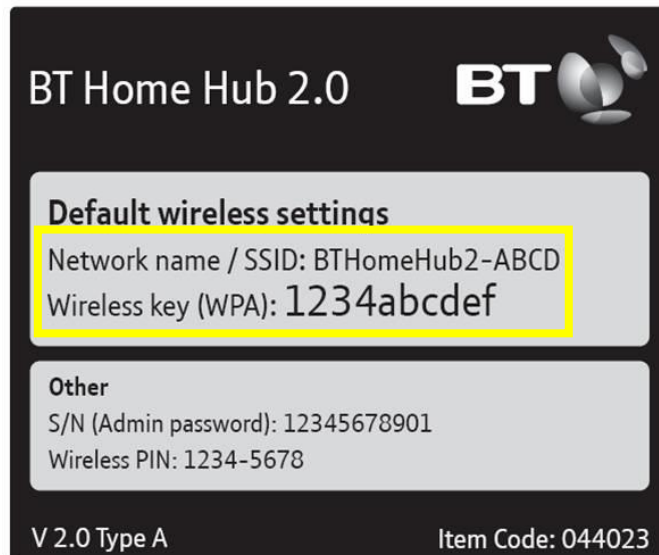
Warning!

Read the Energizer instruction manual and the safety information in it first!

If the energizer will be used in a security application, be sure to configure the Wi-Fi, otherwise intruders could configure it for you and gain control of the energizer.

Get Ready! You need:

1. A Wi-Fi network connected to the Internet.
2. The name of the Wi-Fi network (also known as the SSID). On most Wi-Fi routers this is printed on the back, an example of which is shown below.



3. The Wi-Fi network password, if your Wi-Fi is password protected.
4. The IP Energizer placed within signal range of the Wi-Fi network.
5. Power supply for the IP Energizer via its 240V AC (power point) or 12V DC (battery).
6. An Android or iPhone smart phone for running the IP Energizer Controller App
7. The IP Energizer Controller App from JVA (see below)

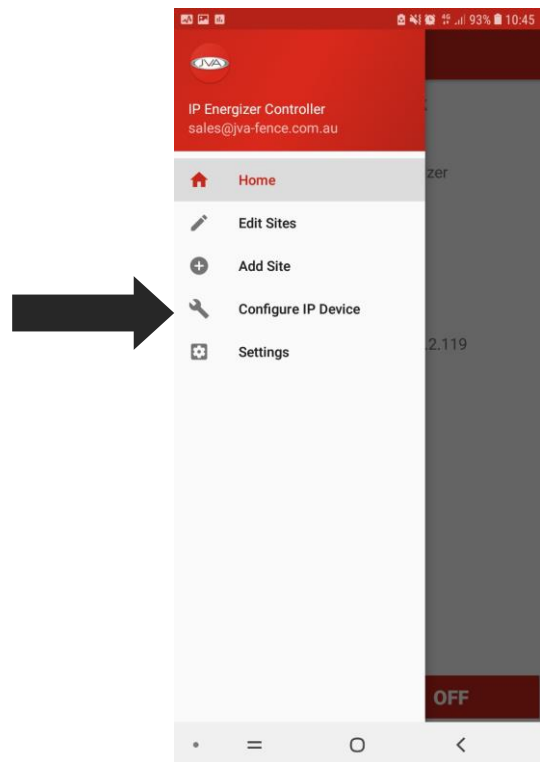
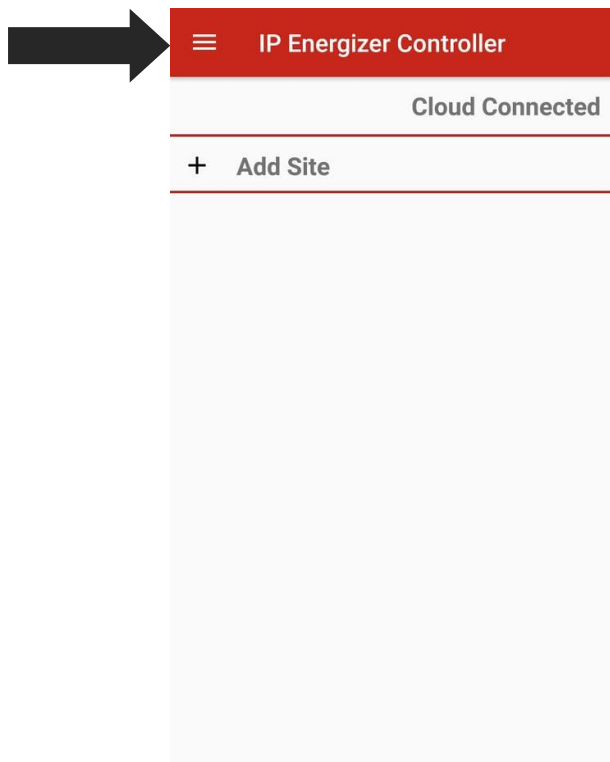
Get Set: Setting up the IP Energizer

Android

1. Plug the IP Energizer into the power supply and turn it on. Be aware that the Energizer could start pulsing; if it does, turn it off using the 'Power' button on the front of the Energizer.
2. Wait for approximately 20 seconds until you see 'IP - 1' on the front of the IP Energizer. This means that the IP Energizer needs to be configured to connect to your Wi-Fi network.
3. Download the 'JVA IP Energizer Controller' App from the [Google Play store](https://play.google.com/store/apps/details?id=com.pakton.jvaipenergizer) and install it on your Android phone or device.



4. Open the navigation drawer and tap settings. Press Configure IP Device.



Choose from the drop down box the SSID of your home Wi-Fi network and enter in the password if it has one. Next enter the IP Energizers serial number and finally choose a password. You will need this password again later when adding a site.

IP Energizer Controller

Configure IP Device

WiFi Networks

PaktonGuest

Enter SSID or choose from dropdown above

PaktonGuest

WiFi Password

Enter the units serial number

Choose a device password

SUBMIT

Press submit, you will see the following screens as it configures the energizer with the details you have entered.

IP Energizer Controller

Configure IP Device

WiFi Networks

Pakton

Enter SSID or choose from dropdown above

P

w

1

E

2

Choose a device password

266576javacherry

SUBMIT

Configure IP Device

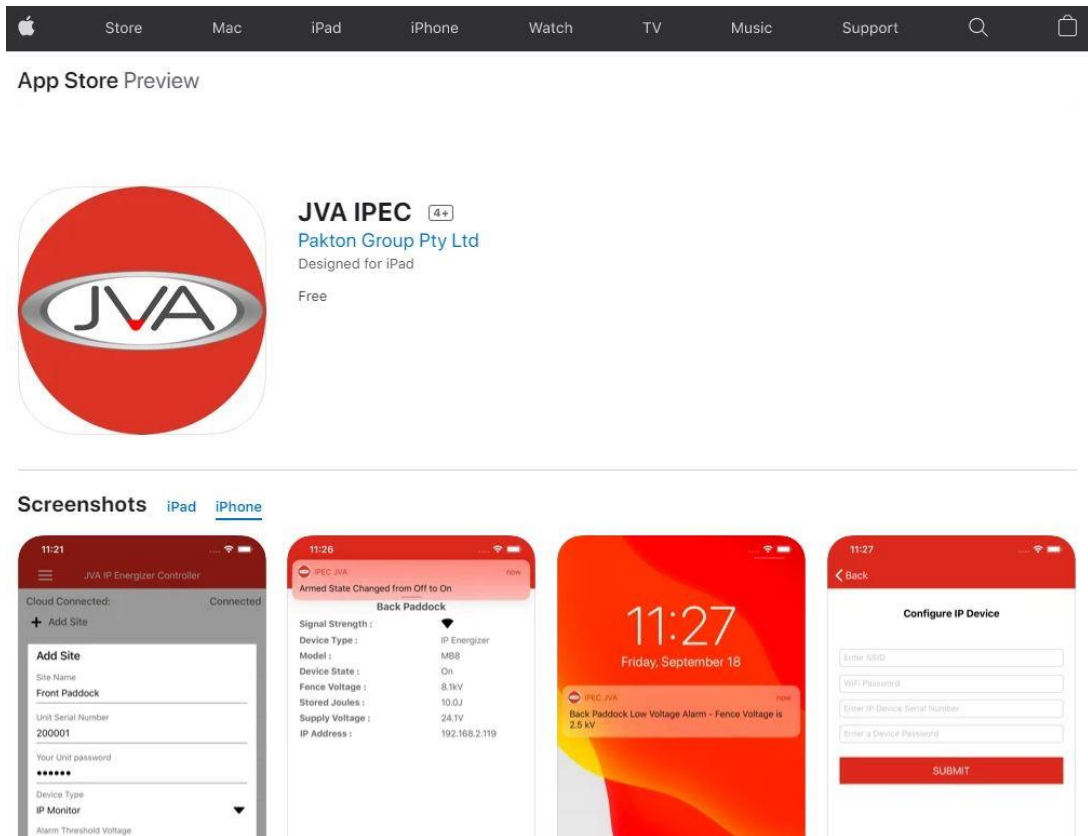
Checking if IP Device seen..

CANCEL OK

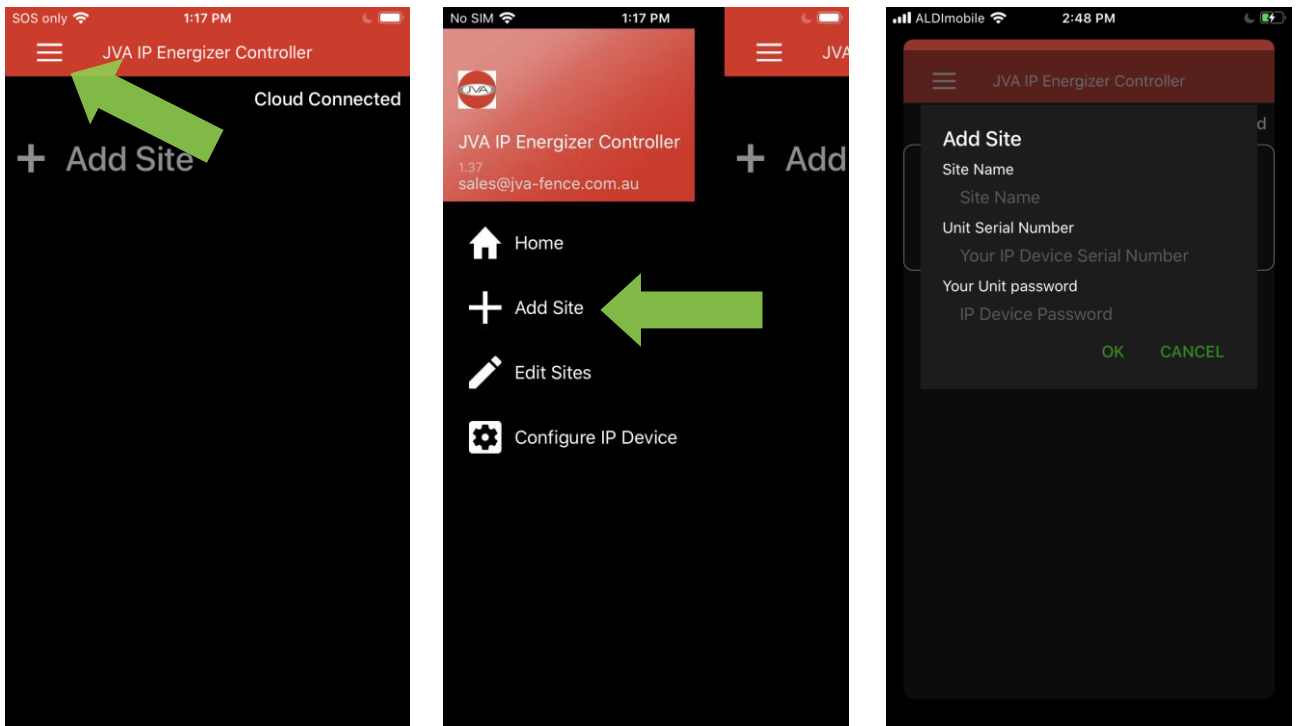
5. Look at the screen on the front of your IP Energizer. If you have entered in the Wi-Fi details correctly it should connect to your home Wi-Fi network and display 'IP-3'.
6. Congratulations – your IP Energizer is configured!

iOS Device

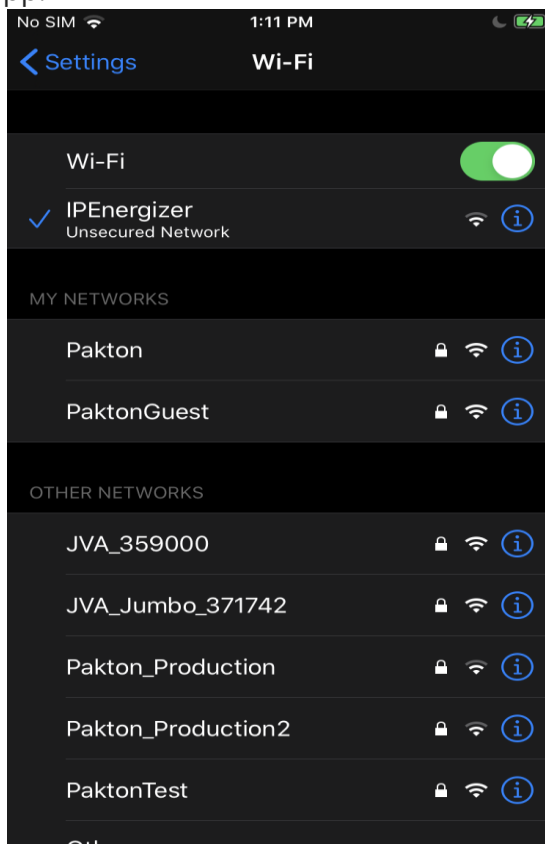
1. Plug the IP Energizer into the power supply and turn it on. Be aware that the Energizer could start pulsing; if it does, turn it off using the 'Power' button on the front of the Energizer.
2. Wait for approximately 20 seconds until you see 'IP – 1' on the front of the IP Energizer. This means that the IP Energizer needs to be configured to connect to your Wi-Fi network.
3. Download the 'JVA IPEC' App from the [iTunes Apple Store](#) and install it on your iOS device.



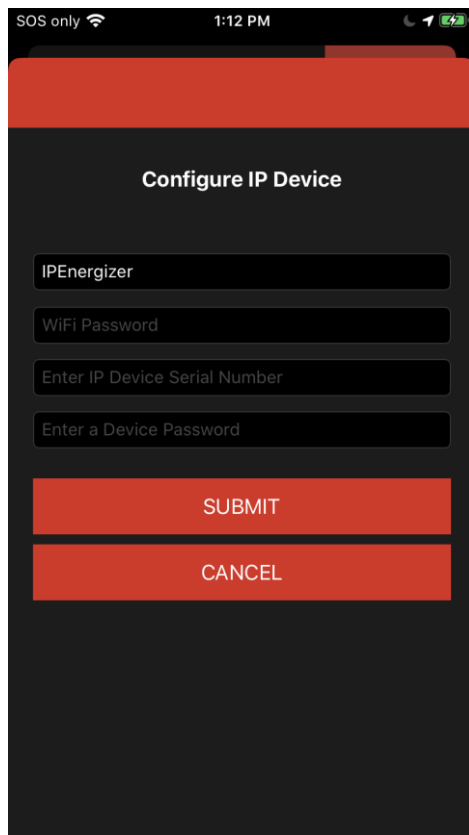
4. Open the navigation bar and tap settings. Press 'add site'.



5. Exit the app and go to your device's Wi-Fi settings and select the network "IP Energizer". Now return to the IP Energizer App.



6. You should be on the 'Configure IP Energizer' page, from here enter your Wi-Fi SSID and Password as well as the Energizer's Serial Number. You can choose whatever password you would like, and enter that also. Click 'Submit' and it should configure your IP Energizer.

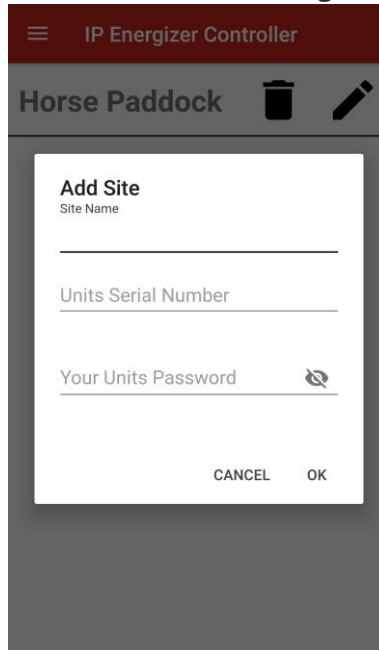


7. Look at the screen on the front of your IP Energizer. If you have entered in the Wi-Fi details correctly it should connect to your home Wi-Fi network and display 'IP-3'.
8. Congratulations – your IP Energizer is configured!

Go: Take control of your IP Energizer

Android

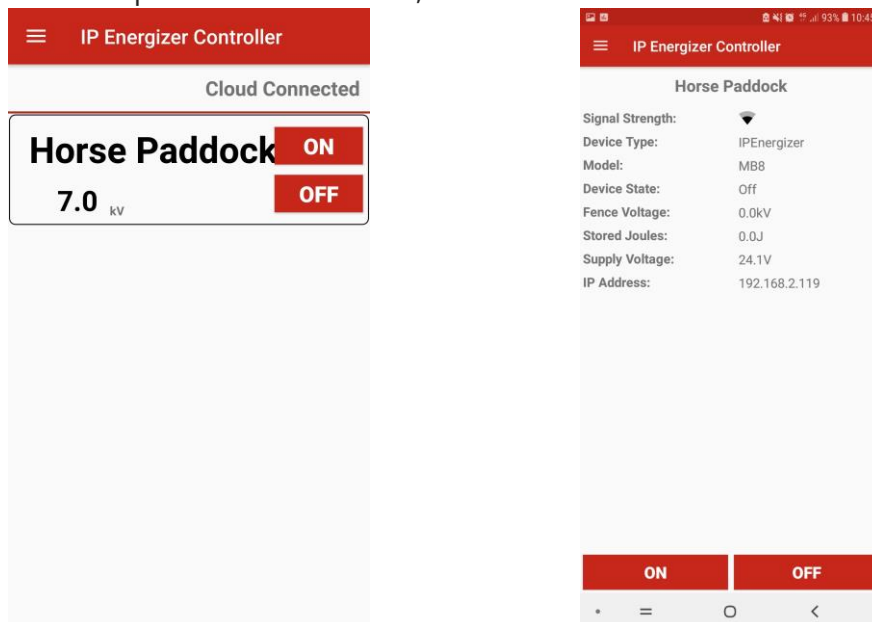
1. Go to the home screen and press 'add site', and the following screen should appear.



The screenshot shows the 'Add Site' dialog box within the 'IP Energizer Controller' app. The app's title bar is dark red with a hamburger menu icon on the left and the text 'IP Energizer Controller'. Below the title bar, the current site name 'Horse Paddock' is displayed in a dark grey bar, accompanied by a trash can icon and a pencil icon. The 'Add Site' dialog is a white box with a dark border. It contains three input fields: 'Site Name', 'Units Serial Number', and 'Your Units Password'. The 'Your Units Password' field has a small eye icon to its right. At the bottom of the dialog, there are two buttons: 'CANCEL' and 'OK'.

2. Enter a site name – we have chosen 'Horse Paddock', then enter the serial number of the IP Energizer, and the password you chose when you configured your IP Energizer. Then choose a threshold voltage – you will get a notification on your phone if the fence voltage falls below this. If you do not want this feature enabled choose 'disabled'. Press OK to add the site and be redirected to the Home screen.

3. The Home screen should show 'Cloud Connected' indicating that you have successfully connected to our cloud servers. Below this is a list of your IP Energizer sites; these show two buttons to turn on and off your IP Energizer. For a more in depth view of one of your sites you can press the sites name, in our case 'Horse Paddock'.

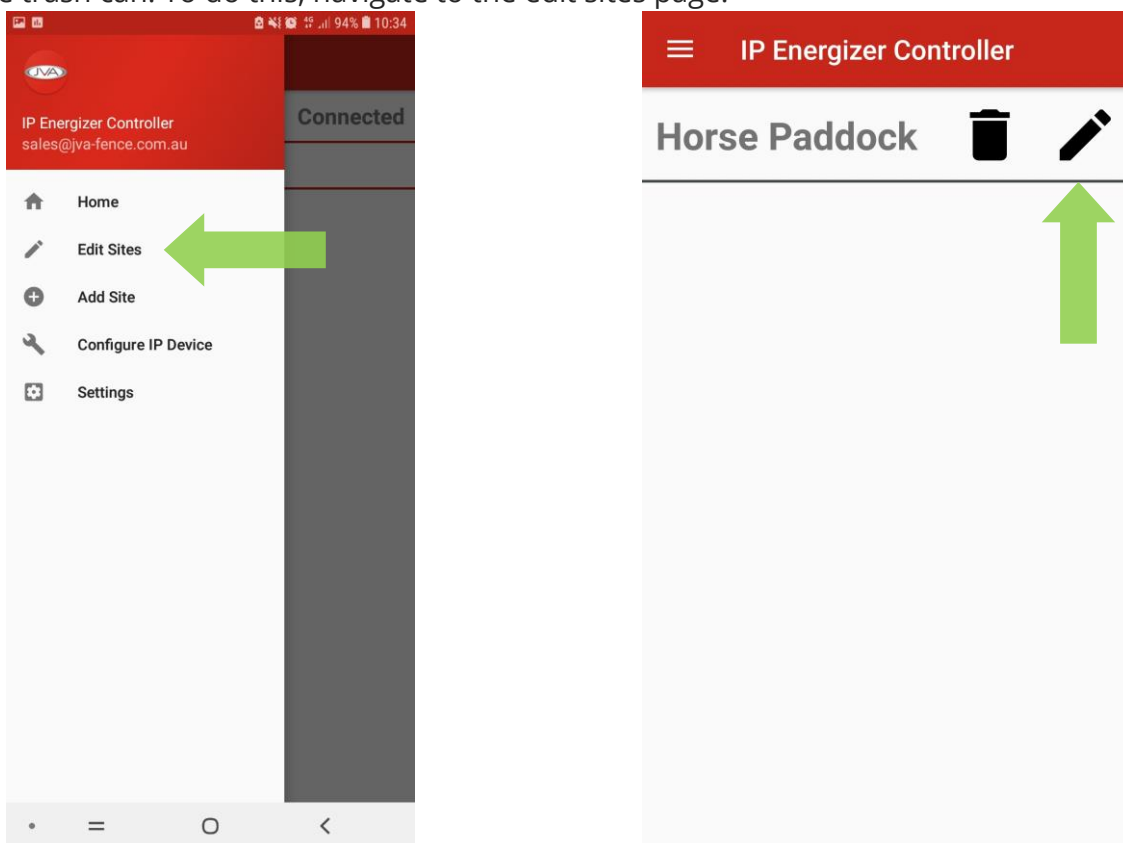


From here the Site Name you entered will appear at the top of the screen, followed by the status information of your IP Energizer, which includes:

- a. **Signal Strength:** This indicates how well your IP Energizer is connected to your Wi-Fi network; it is not the signal strength of your mobile phone.
- b. **Device Type:** This will indicate the device type you are using. In this case 'IP Energizer'.
- c. **Model:** This shows the model name of your IP Energizer.
- d. **Device State:** This shows 'On' when the IP Energizer is running and putting voltage down your fence. It states 'Off' if the IP Energizer is in standby mode waiting for you to turn it on.
- e. **Fence Voltage:** This shows the actual voltage on the Energizer fence terminals. This will update in real time.
- f. **Stored Joules:** This shows the stored energy used by the Energizer for each pulse. It will rise when the IP Energizer has to work harder under heavy fence loads.
- g. **Supply Voltage:** This shows voltage of the power supply that is being used to power your IP Energizer. This could be a battery's voltage, or a power pack's output voltage.
- h. **IP Address:** This is the IP address that has been allocated by your home Wi-Fi router to your IP Energizer.

Should you wish to add additional IP Energizers to your App, simply navigate back to the settings and add another Site.

You can edit the Sites settings at any point via the edit button or stop monitoring a site by deleting it using the trash can. To do this, navigate to the edit sites page.



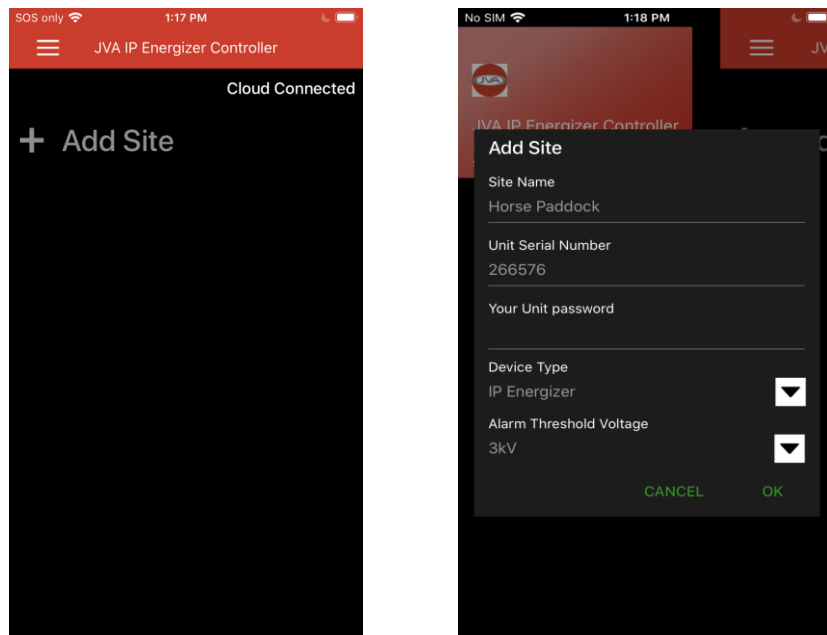
Congratulations, you can now monitor and control your IP Energizer from anywhere in the world!

If you have not already done so, you can now connect the Energizer to the fence (as per the installation instructions in the Energizer manual), making sure that it remains in range of your home Wi-Fi.

8. Disclaimer: If you give the IP Energizer password and serial number to anyone else, they will also be able to turn your Energizer on and off. You can change the password at any time by defaulting your IP Energizer and reconfiguring it by following the steps under 'Get Set: Setting up the IP Energizer', above.

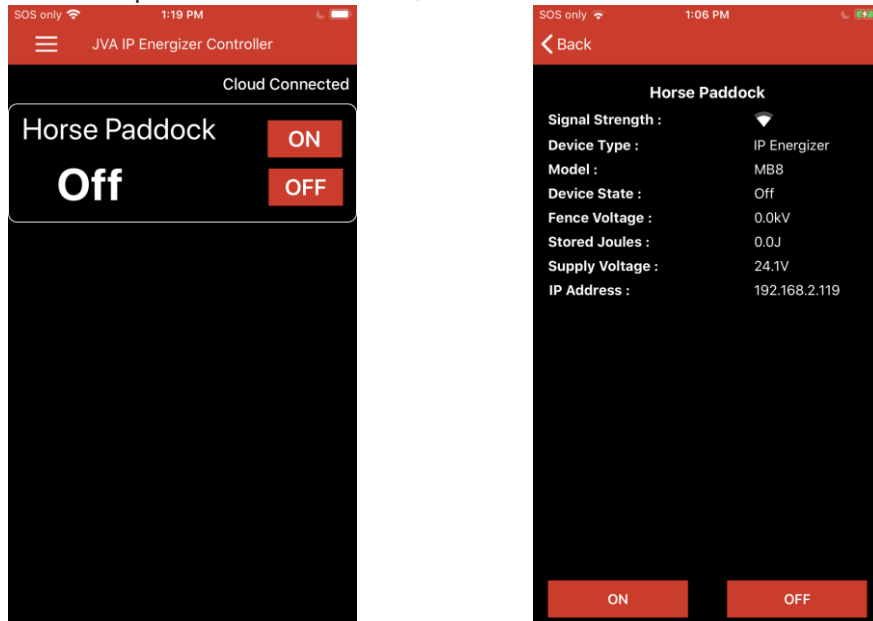
iOS Device

1. Go to the home screen and press 'add site', and the following screen should appear.



2. Enter a site name – we have chosen 'Horse Paddock', then enter the serial number of the IP Energizer, and the password you chose when you configured your IP Energizer. Then choose a threshold voltage – you will get a notification on your phone if the fence voltage falls below this. If you do not want this feature enabled choose 'disabled'. Press OK to add the site and be redirected to the Home screen.

3. The Home screen should show 'Cloud Connected' indicating that you have successfully connected to our cloud servers. Below this is a list of your IP Energizer sites; these show two buttons to turn on and off your IP Energizer. For a more in depth view of one of your sites you can press the sites name, in our case 'Horse Paddock'.

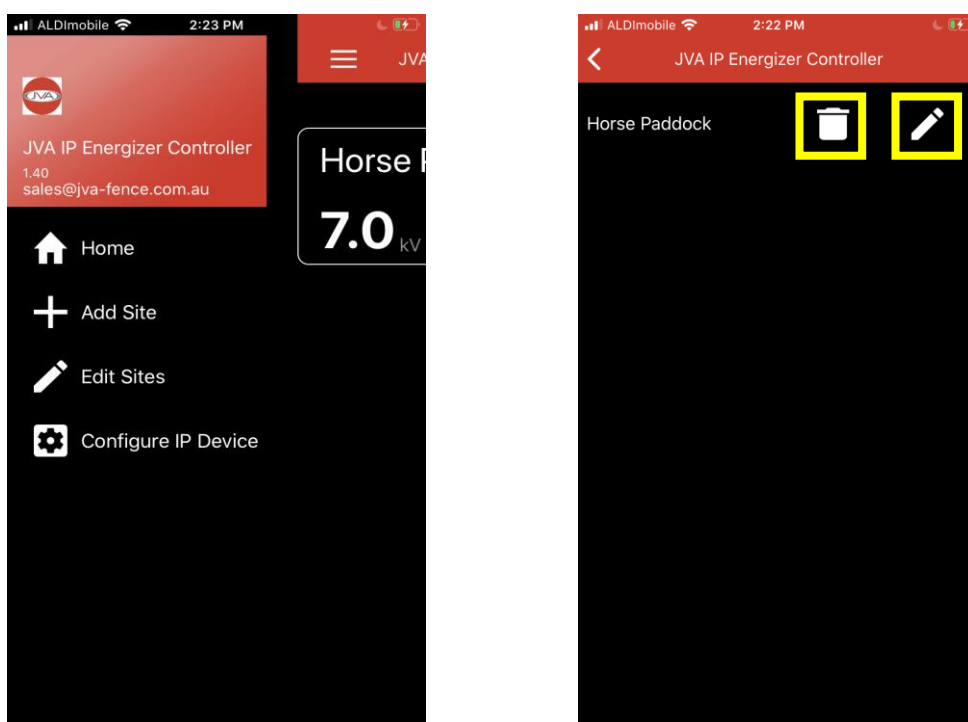


From here the Site Name you entered will appear at the top of the screen, followed by the status information of your IP Energizer, which includes:

- i. **Signal Strength:** This indicates how well your IP Energizer is connected to your Wi-Fi network; it is not the signal strength of your mobile phone.
- j. **Device Type:** This will indicate the device type you are using. In this case 'IP Energizer'.
- k. **Model:** This shows the model name of your IP Energizer.
- l. **Device State:** This shows 'On' when the IP Energizer is running and putting voltage down your fence. It states 'Off' if the IP Energizer is in standby mode waiting for you to turn it on.
- m. **Fence Voltage:** This shows the actual voltage on the Energizer fence terminals. This will update in real time.
- n. **Stored Joules:** This shows the stored energy used by the Energizer for each pulse. It will rise when the IP Energizer has to work harder under heavy fence loads.
- o. **Supply Voltage:** This shows voltage of the power supply that is being used to power your IP Energizer. This could be a battery's voltage, or a power pack's output voltage.
- p. **IP Address:** This is the IP address that has been allocated by your home Wi-Fi router to your IP Energizer.

Should you wish to add additional IP Energizers to your App, simply navigate back to the settings and add another Site.

You can edit the Sites settings at any point via the edit button or stop monitoring a site by deleting it using the trash can. To do this, navigate to the edit sites page.



Congratulations, you can now monitor and control your IP Energizer from anywhere in the world!

If you have not already done so, you can now connect the Energizer to the fence (as per the installation instructions in the Energizer manual), making sure that it remains in range of your home Wi-Fi.

9. Disclaimer: If you give the IP Energizer password and serial number to anyone else, they will also be able to turn your Energizer on and off. You can change the password at any time by defaulting your IP Energizer and reconfiguring it by following the steps under 'Get Set: Setting up the IP Energizer', above.

Defaulting your IP Energizer

If you want to change the password of your IP Energizer, or if you need to reconfigure it to connect to a different Wi-Fi network, you will need to reset the IP Energizer to its factory default.

1. Ensure that the IP Energizer is in standby mode – (the screen is on, but it isn't pulsing).
2. Remove power from the IP Energizer (turn the 240Vac or 12V DC off at the source), wait until the screen is completely blank.
3. Turn the power back on and wait for the display to show characters. At this point press and hold the power button on the front of the IP Energizer – hold this for approximately 5 seconds

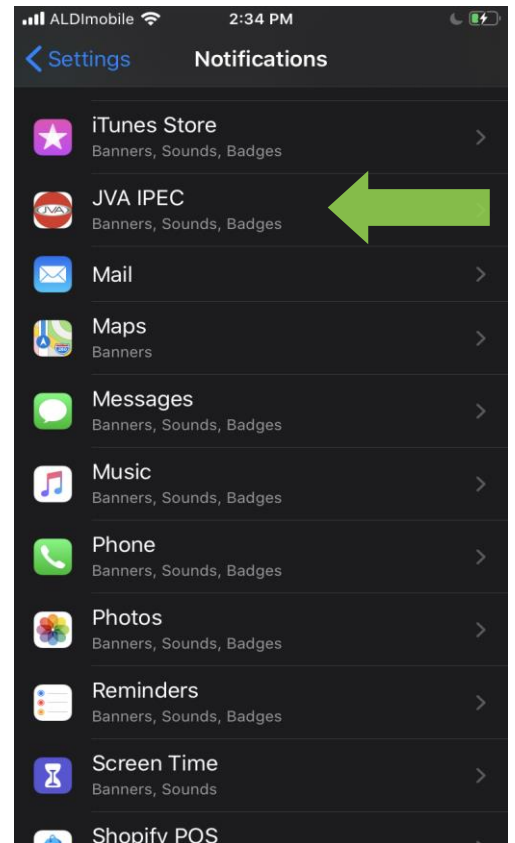
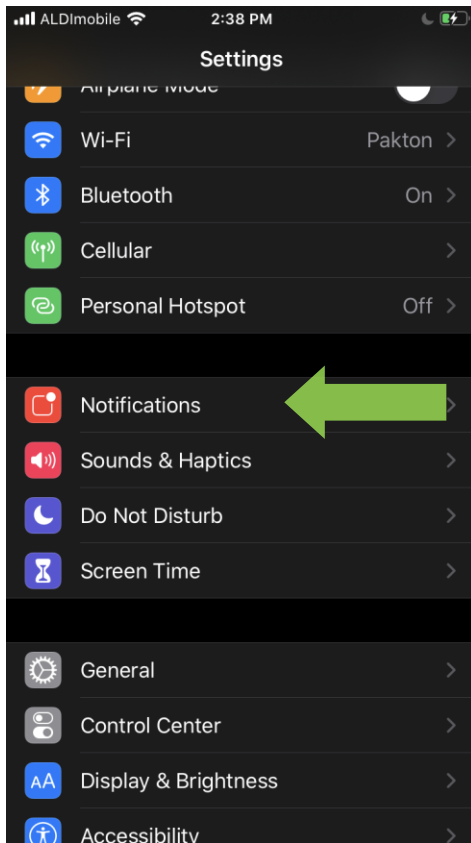
and then release. You should notice that the screen shows '----'. Note that the energizer may start pulsing during this procedure.

4. Wait for about 20 seconds, the screen will then display 'IP-1' this means it has been defaulted.

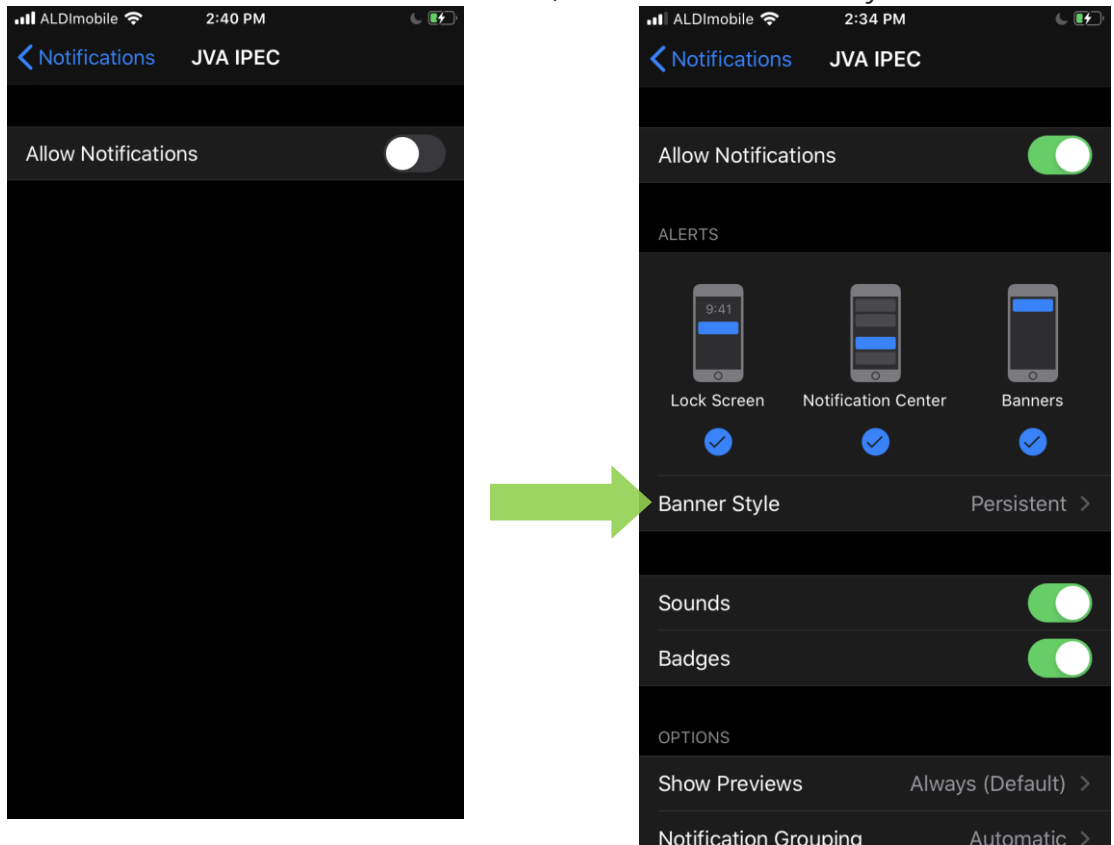
Persistent Notifications

If you would like alerts about your IP energizer to stay in the notifications area until you dismiss them, you will need to enable the "persistent notifications" setting on your iOS device. Android devices will have persistent notifications enable by default, so you do not need to enable this.

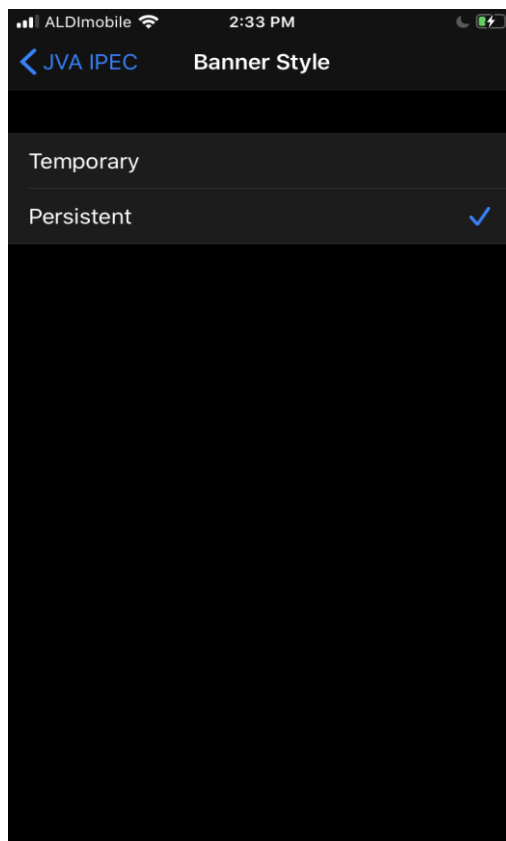
1. In your ios device setting menu, select "notifications" and then select the IPEC from the list of apps.



2. Ensure you have allowed notifications for the IPEC, then select “banner style”.



3) Finally, click “persistent”.



Alerts from the IPEC app will now remain in your notifications until you dismiss them. You can dismiss notifications by swiping the notification to the left and selecting “dismiss”

IP Energizer LCD Display

After it is turned off, the Energizer will display the DC supply voltage for a few seconds and then show the IP Energizer status.

- 24 10** DC Supply Voltage (in this case, 24.1 V).
- IP-1** The IP Energizer is waiting for you to set the Wi-Fi Network details.
- IP-2** Connecting to the saved Wi-Fi network name (SSID). If unit doesn't go to IP-3, it may indicate an incorrect SSID or password. Default the IP Energizer and reconfigure again.
- IP-3** Connected to you Wi-Fi network. This is the normal operating mode.
- IP-4** Failed to connect to the Wi-Fi network – this may resolve itself.
- IP-5** Incorrect Wi-Fi password. Default the IP Energizer and reconfigure it again.
- IP-6** Disconnected from Wi-Fi. Check Access Point internet, signal and configuration.

Extending Your Wi-Fi Range

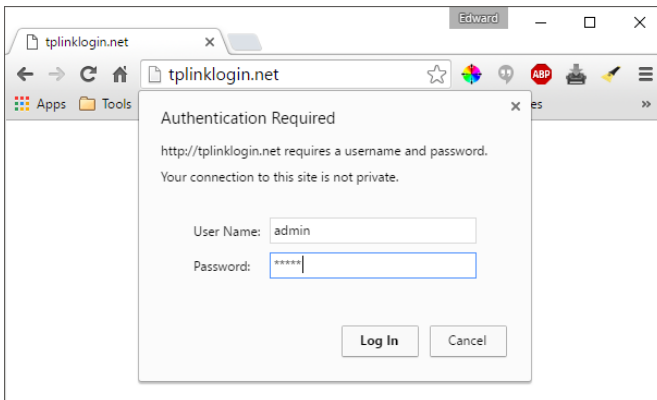
You may find that the IP Energizer cannot connect to your home Wi-Fi because it is not within signal range. This issue can be overcome installing a Wi-Fi extender. Setup is typically simple and we have included the necessary steps that we used to configure the TP-Link Nano router (TL-WR702N).



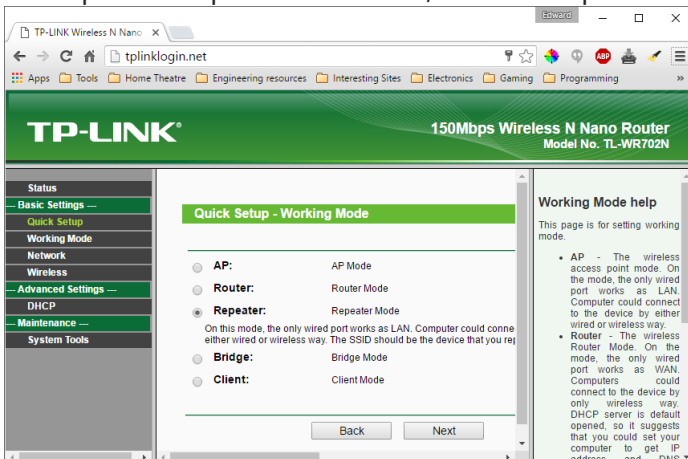
1. Plug your Wi-Fi extender into USB power and switch it on, plug one end of the supplied Ethernet cable into the Wi-Fi extender, and the other into your computer



2. Open a web browser such as Google Chrome on your computer and go to <http://tplinklogin.net>
Enter User Name: **admin**
Enter Password: **admin**



3. Click quick setup and then next, choose Repeater and then click next again



4. Simply select your countries region and press 'Survey'
5. This should list all Wi-Fi access points that the Wi-Fi repeater can see, press connect for the access point that is your home Wi-Fi network
6. This should fill in all the necessary details required to connect to this network bar the password which you must fill in, this is the password that you use to connect to your current Wi-Fi network.
7. You will then be asked to reboot to save the settings. Click Reboot
8. Find a suitable location for your Wi-Fi extender; This needs to be close enough to your IP Energizer such that it can provide Wi-Fi signal to it, but also within Wi-Fi range of your current Wi-Fi network, plug it in and switch it on.
9. Your Wi-Fi signal range has now been extended and the IP Energizer should be able to connect to it

Using a portable 3G Portable Modem

If your IP Energizer is not within Wi-Fi range, you can use an off the shelf 3G or 4G portable modem such as the Huawei E5251. These are also known as pocket Wi-Fi. These devices use a carrier like Telstra's mobile network to gain Internet access and then create a Wi-Fi hotspot. You can use a contract or a prepaid SIM card with the network of your choice, but it must have data available on the plan. Please ensure there is a 3G or 4G signal from the network of your choice where the IP Energizer is to be located before considering this option. The IP Energizer only uses a very small amount of data, approximately 1MB per day.

www.pakton.com.au

Tel: +61 7 3888 3793

ST093 1v11